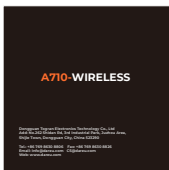


User Manual



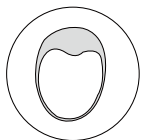
Transmitter x 1



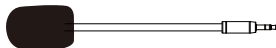
User manual x1



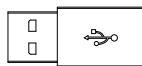
Headphone x1



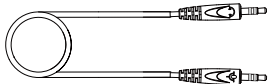
Cloth ear pad x 2



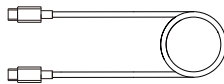
Detachable mic x 1



Type-c to USB adapter x1



3.5mm audio cable x1



Type-c cable x1



### **Basic parameter**

Battery: 1400mAh

Weight: 345g

Backlight: RGB

Microphone: detachable

Size: 202\*216\*90mm

3.5mm cable length: 1m(male to male)

Type-c cable length: 1.2m(male to male)

### **Speaker parameter**

Drive unit :  $\Phi$ 50mm \* 10 mm(H)

Sensitivity : 104dB $\pm$ 3dB

Impedance: 24 $\pm$ 15% OHMS

Frequency response: 20~20KHz

Total harmonic distortion:  $\leq$  5%

Power rating: 10mW-15mW(max)

Buzz & Rating: sine wave 0.49V

Load test: normal 10mW 24 hours

### **Electronics parameter**

Play mode: 5.8G/Type-c/3.5mm

Wireless standard: 5.8G

Frequency range: 5725-5850MHz

RF Range: 10M (unobstructed)

Charging Voltage: DC 5V 500mA

Charging Time: appr 4h

Working Time: appr 10h(lighting on)  
appr 12h(lighting off)

Standby time: 3 months

### **Microphone parameter**

Drive unit:  $\phi$ 6mm \* 2.7mm(H)

Sensitivity: -42 $\pm$ 3 dB

Directivity: omnidirectional

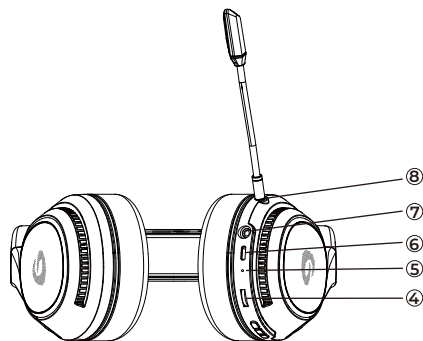
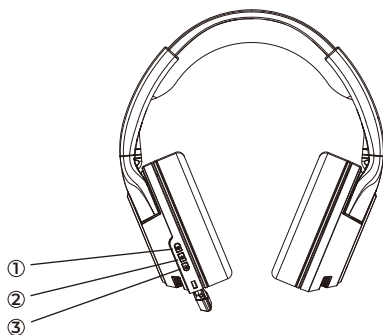
Impedance: 2.2KOHMS

Frequency response: 100~10KHz

Total harmonic distortion:  $\leq$  5%

Operating voltage: DC 1.0V~10V

Current consumption: Max 0.5mA



### Function

- |                   |                 |               |
|-------------------|-----------------|---------------|
| ① Lighting button | ② Power button  | ③ Mic button  |
| ④ Volume button   | ⑤ Indicator LED | ⑥ Type-c jack |
| ⑦ Audio jack      | ⑧ Mic jack      |               |

### 5.8G pairing

1. Insert 5.8G transmitter in device, headset and launcher will be paired automatically.
2. Long press the power button and the Mic button for 3s to enter mandatory pairing, the headset indicator LED flash blue quickly. After the pairing is successful, the indicator LED is always on.

### Audio cable

Use 3.5mm audio cable to connect headphone and playback devices directly, without turning on the power.

**1.Power button:** long press for 3s, turn on with one beep; long press for 3s, turn off with one beep.

**2.Lighting button:** flowing RGB light effect and four color (red, green, blue, purple) single breathing light effects.

**3.Mic button:** press once, turn on with two beeps, turn off with one beep.

**4.Volume button:** rolling the button to increase or decrease volume.

**5.Low power:** when the battery low power, the sound will beep three times every one minute.

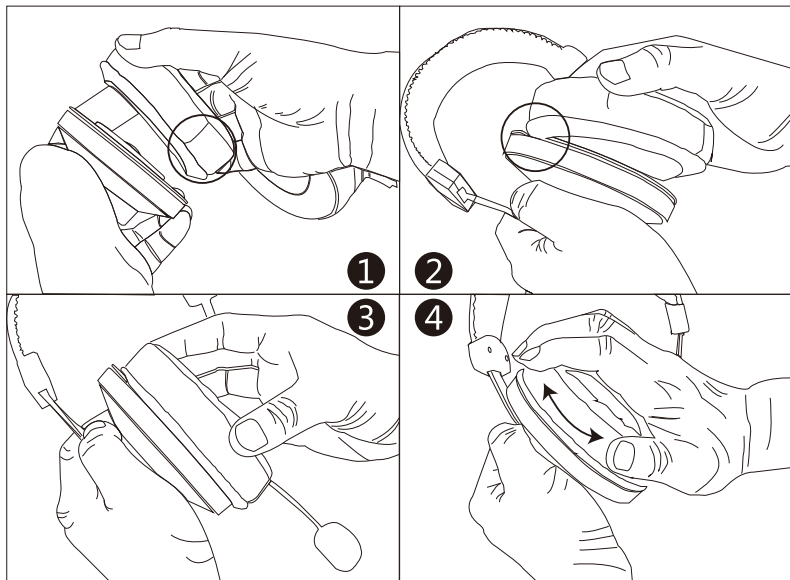
#### **6.Indicator LED:**

- ① Power on-flashing blue color
- ② Low power-flashing red color
- ③ Charging- flashing red color
- ④ Full charge- LED turn off
- ⑤ Fast flashing blue color-5.8G pairing

#### **7.Choose working mode which you want to play.**

- ① Type-c to type-c
- ② Type-c to USB
- ③ Audio output mode
- ④ 5.8G wireless mode

## How to replace ear pad



① Seam is at the bottom.

② Buckle on the gap.

③ Insert it into the gap.

④ Rotate gently.

# A710-WIRELESS

Dongguan Togran Electronics Technology Co., Ltd  
Add: No.262 Shidan Rd, 3rd Industrial Park, Juzhou Area,  
Shijie Town, Dongguan City, China 523290

Tel.: +86 769 8630 8806    Fax: +86 769 8630 8826  
Email: [Info@dareu.com](mailto:Info@dareu.com)    [CS@dareu.com](mailto:CS@dareu.com)  
Web: [www.dareu.com](http://www.dareu.com)